

PROPOSED
EXISTING

SYMBOLS

PROPOSED
 - Proposed Street Light
 - Proposed Pole
 - Proposed Transformer

EXISTING
 - Existing Street Light
 - Existing Pole
 - Existing Transformer

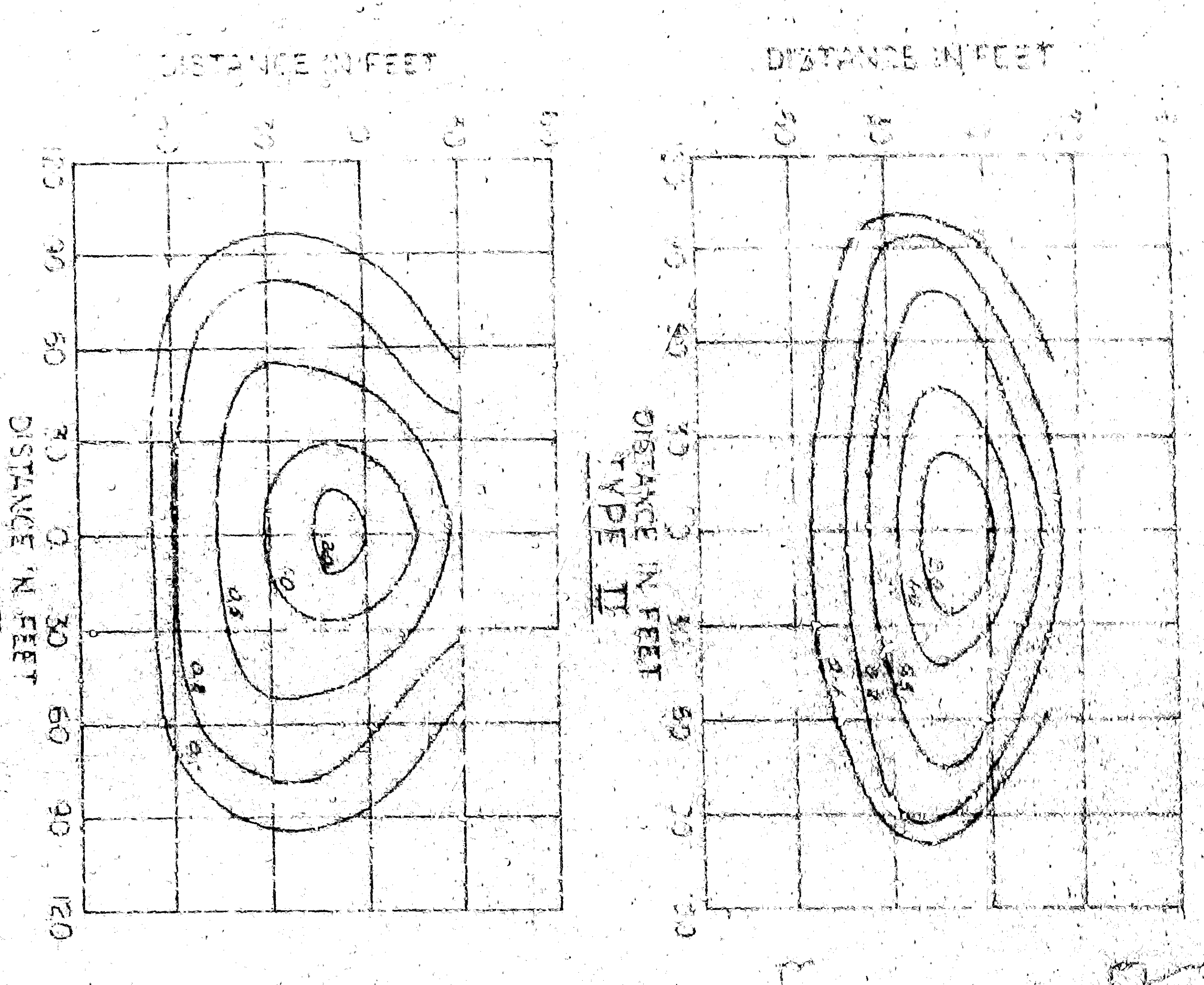
TRAFFIC SIGNAL
 - Traffic Signal

STANDARD DETAILS
 - Standard Details

REVISIONS

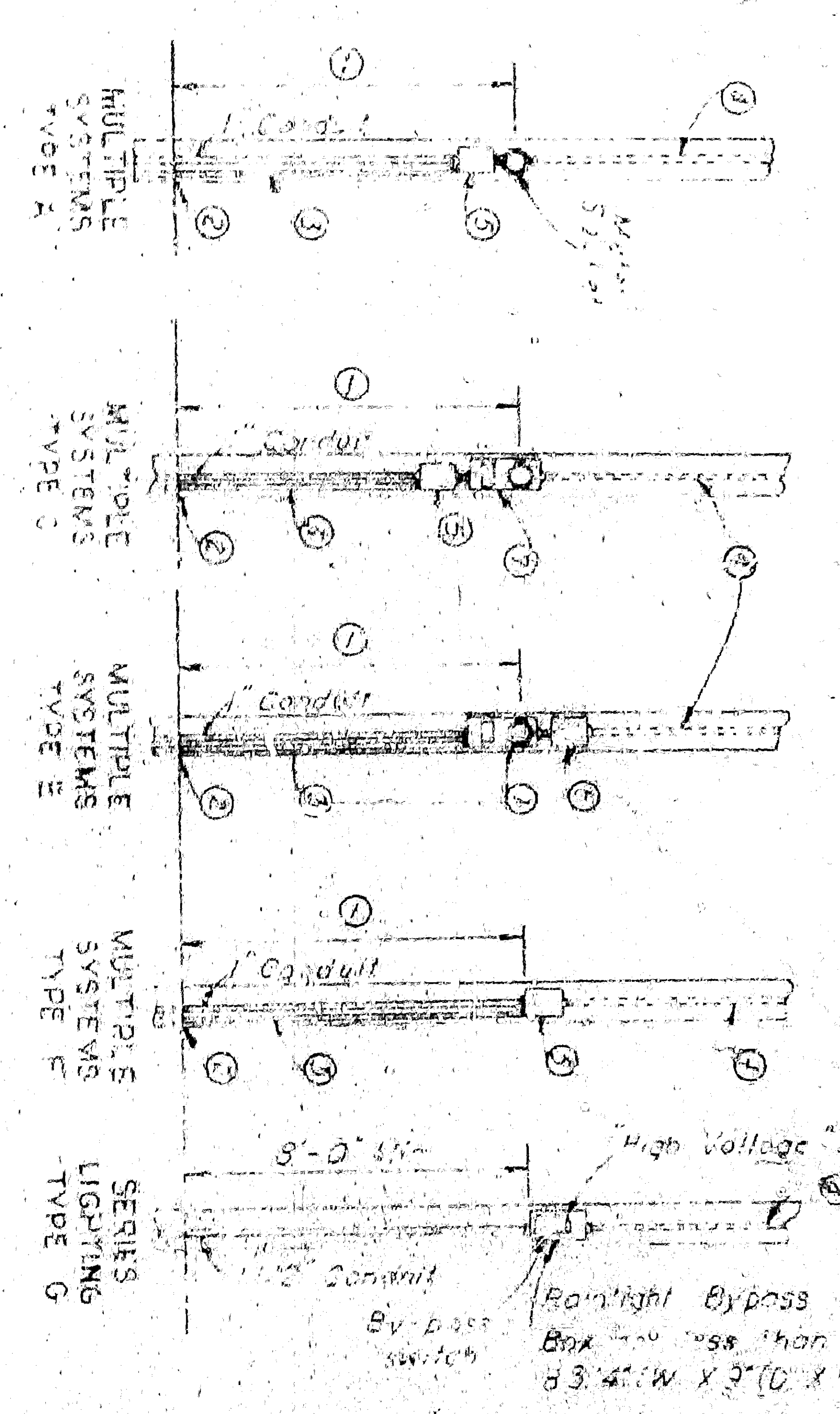
NO.	DATE	DESCRIPTION
1	6-1-59	ISSUED FOR PERMITS
2	6-1-59	ISSUED FOR CONSTRUCTION

APPROVED BY: [Signature]
 ENGINEER: [Signature]
 PROJECT: MEADOWBROOK PROJECT AREA NO. 1
 SHEET: 2875
 SCALE: AS NOTED



ISOLUX LINES OF MINIMUM HORIZONTAL FOOT CANDLES

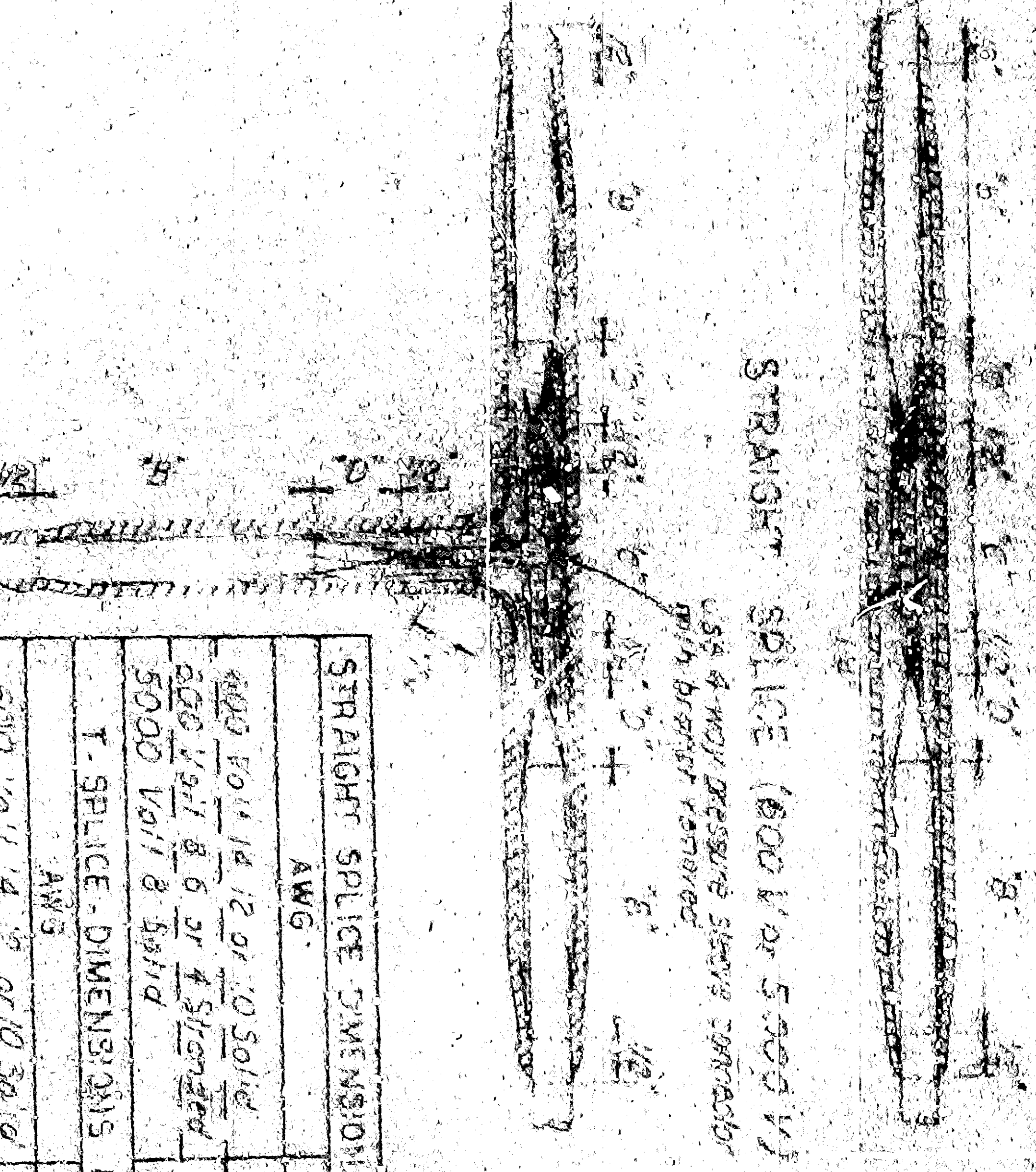
See Notes on Drawing for Lighting Luminaire 30' Mounting 1'-1/2" dia.
 20,000 lumens Mercury Vapor Lamp
 Section 1'-1/2" dia.



1. Length of service conductors to be selected for serving utility.
2. See groundings of foot for Types A, B, C, D, E, F, G.
3. Grounding conductor between shall be 1/2 conductor for horizontal installation.
4. If service pole height owned service conductor, roadway and entrance lines shall be furnished by contractor and installed by serving utility. State owned poles owned by contractor shall also include the service conductor. If service conductor fittings are used, they shall be installed by contractor with a service head of shall be selected to prevent the entrance of rodents and other pests.
5. See Notes on Drawing for details.
6. See Notes on Drawing for details.
7. See Notes on Drawing for details.
8. See Notes on Drawing for details.
9. See Notes on Drawing for details.
10. See Notes on Drawing for details.
11. See Notes on Drawing for details.
12. See Notes on Drawing for details.
13. See Notes on Drawing for details.
14. See Notes on Drawing for details.
15. See Notes on Drawing for details.
16. See Notes on Drawing for details.
17. See Notes on Drawing for details.
18. See Notes on Drawing for details.
19. See Notes on Drawing for details.
20. See Notes on Drawing for details.

SERVICE DETAILS

NO SCALE

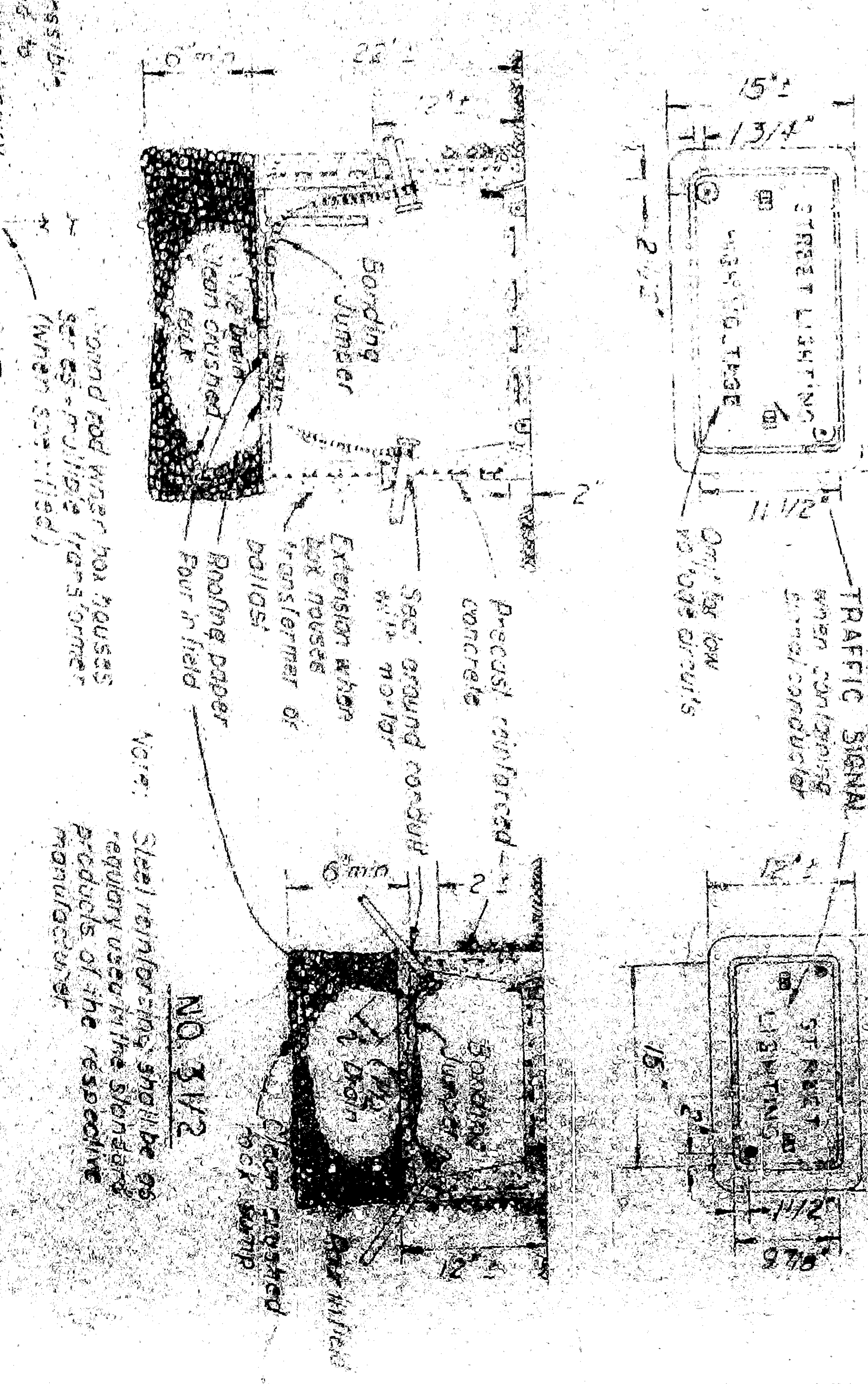
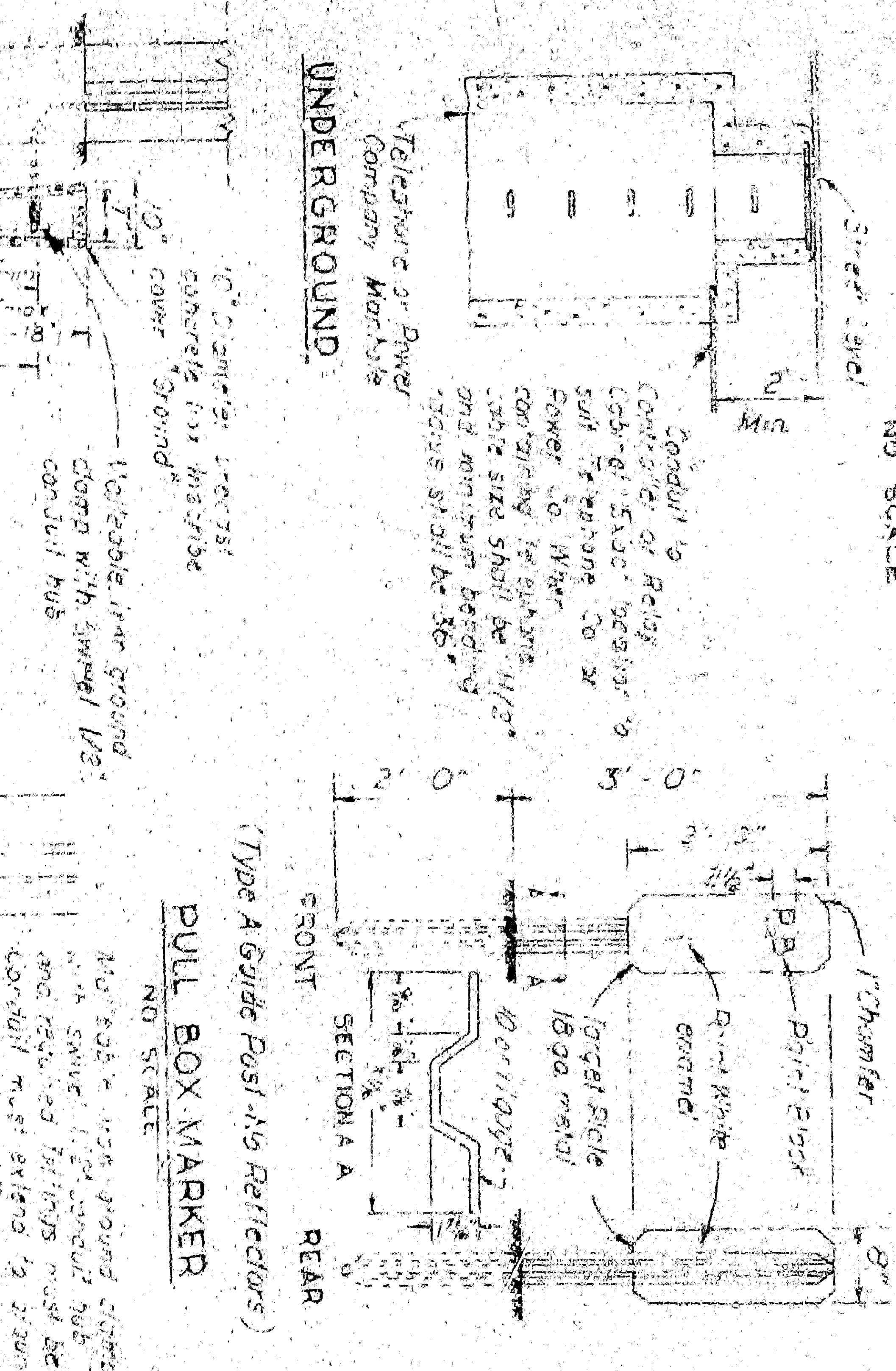


600 VOLT T-SPLICE

- PROCEDURE (Up to 49 AWG only)
1. Apply insulation from each conductor to distance 1/2" (1/2" for 24 AWG and 26 AWG).
 2. Strip 1/2" of insulation from each conductor.
 3. Apply 1/2" of insulation from each conductor to distance 1/2" (1/2" for 24 AWG and 26 AWG).
 4. Apply 1/2" of insulation from each conductor to distance 1/2" (1/2" for 24 AWG and 26 AWG).
 5. Apply 1/2" of insulation from each conductor to distance 1/2" (1/2" for 24 AWG and 26 AWG).
 6. Apply 1/2" of insulation from each conductor to distance 1/2" (1/2" for 24 AWG and 26 AWG).
 7. Apply 1/2" of insulation from each conductor to distance 1/2" (1/2" for 24 AWG and 26 AWG).
 8. Apply 1/2" of insulation from each conductor to distance 1/2" (1/2" for 24 AWG and 26 AWG).
 9. Apply 1/2" of insulation from each conductor to distance 1/2" (1/2" for 24 AWG and 26 AWG).
 10. Apply 1/2" of insulation from each conductor to distance 1/2" (1/2" for 24 AWG and 26 AWG).

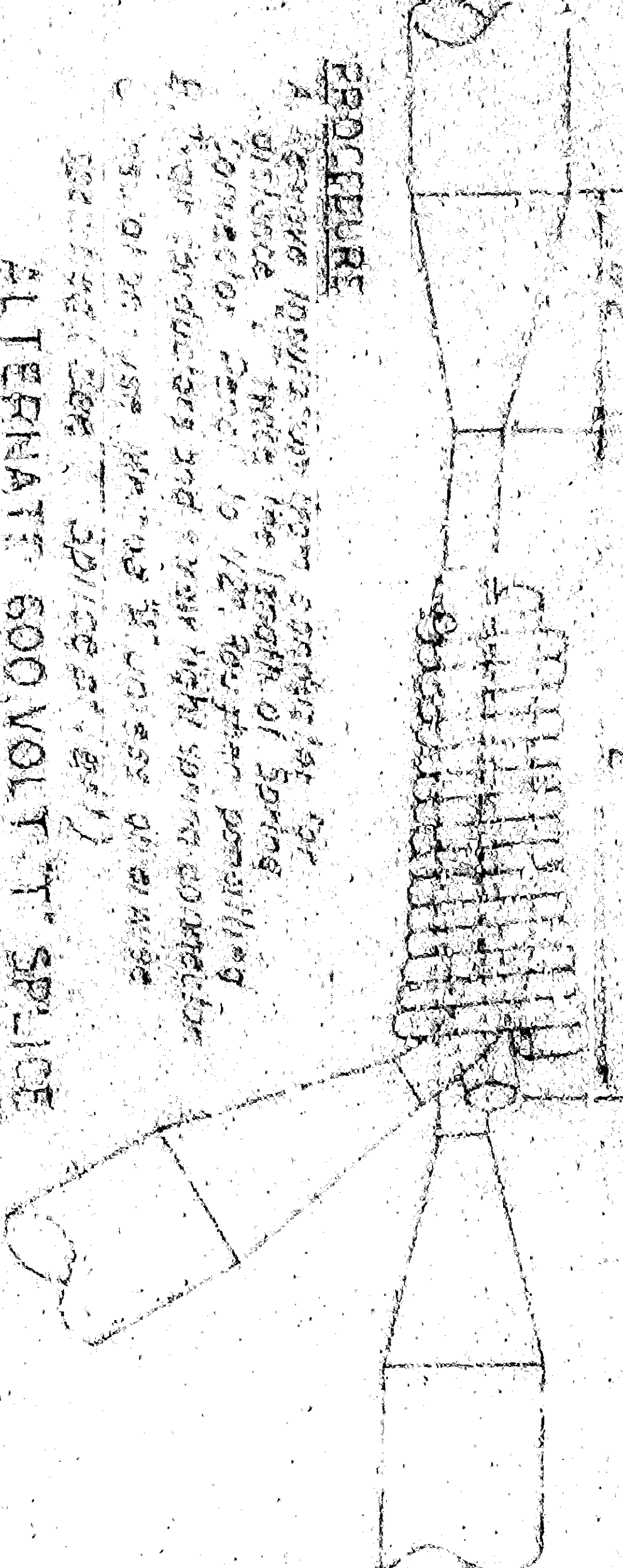
SPLICING DETAILS

NO SCALE



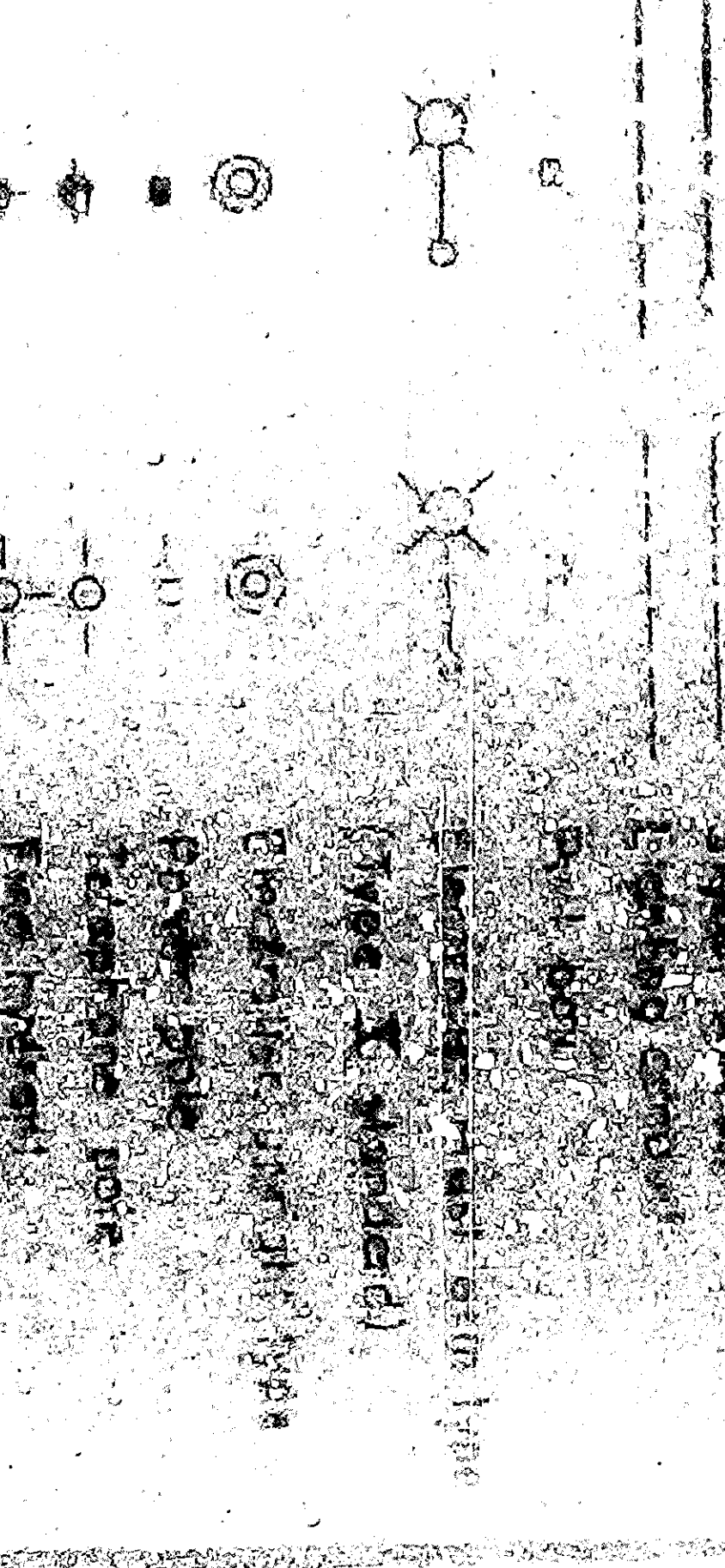
PULL BOXES

NO SCALE



TYPICAL GUARD POST

SYMBOLS



DEVELOPMENT AGENCY OF THE CITY OF SAN BERNARDINO

MEADOWBROOK PROJECT AREA NO. 1

CALIE RIO

ACCEPTED BY: *[Signature]*

DESIGNED BY: *[Signature]*

CHECKED BY: *[Signature]*

DRAWING NO. 2875

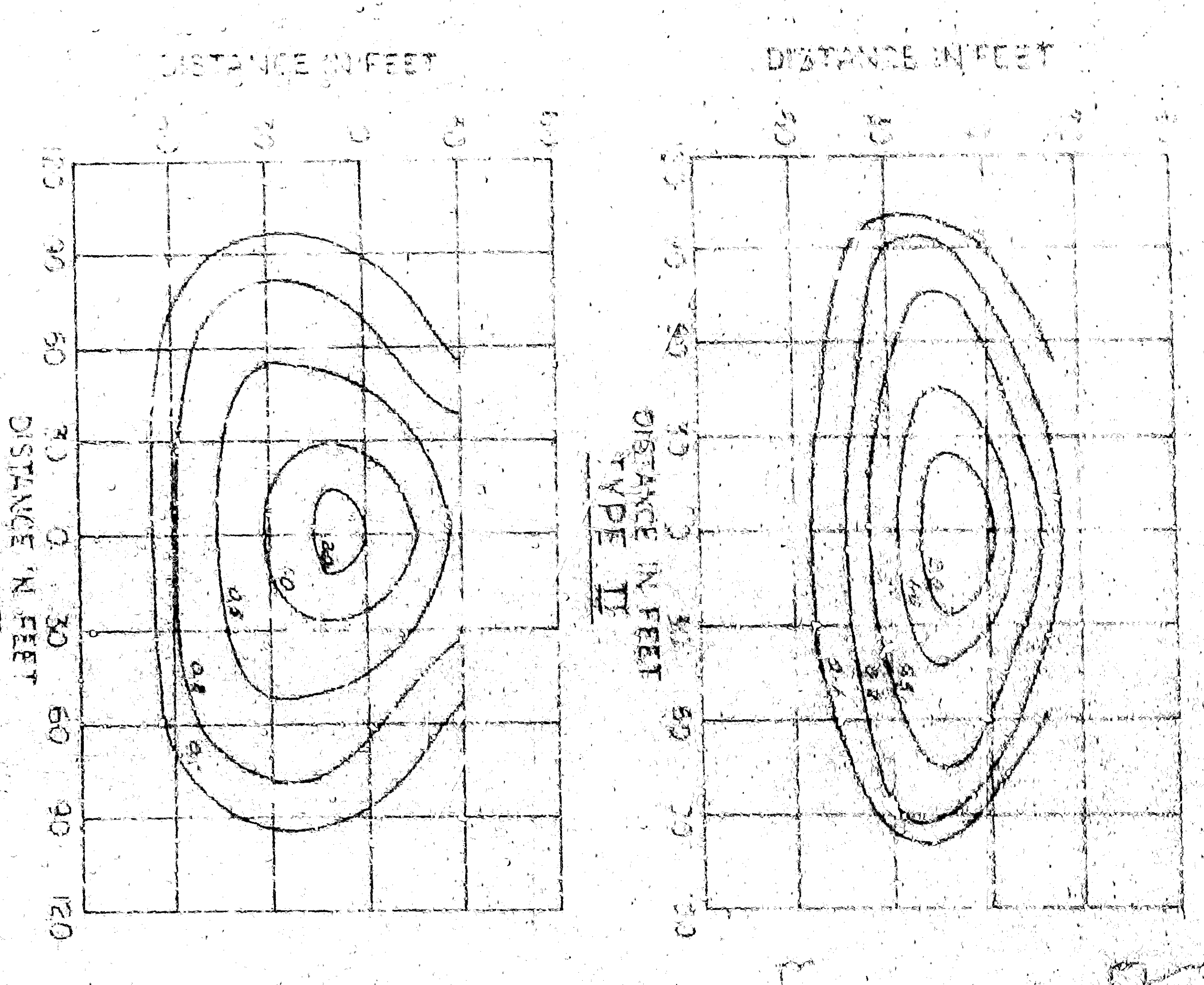
SCALE AS NOTED

STATE OF CALIFORNIA DEPARTMENT OF PUBLIC WORKS DIVISION OF HIGHWAYS

HIGHWAY LIGHTING INSTALLATIONS

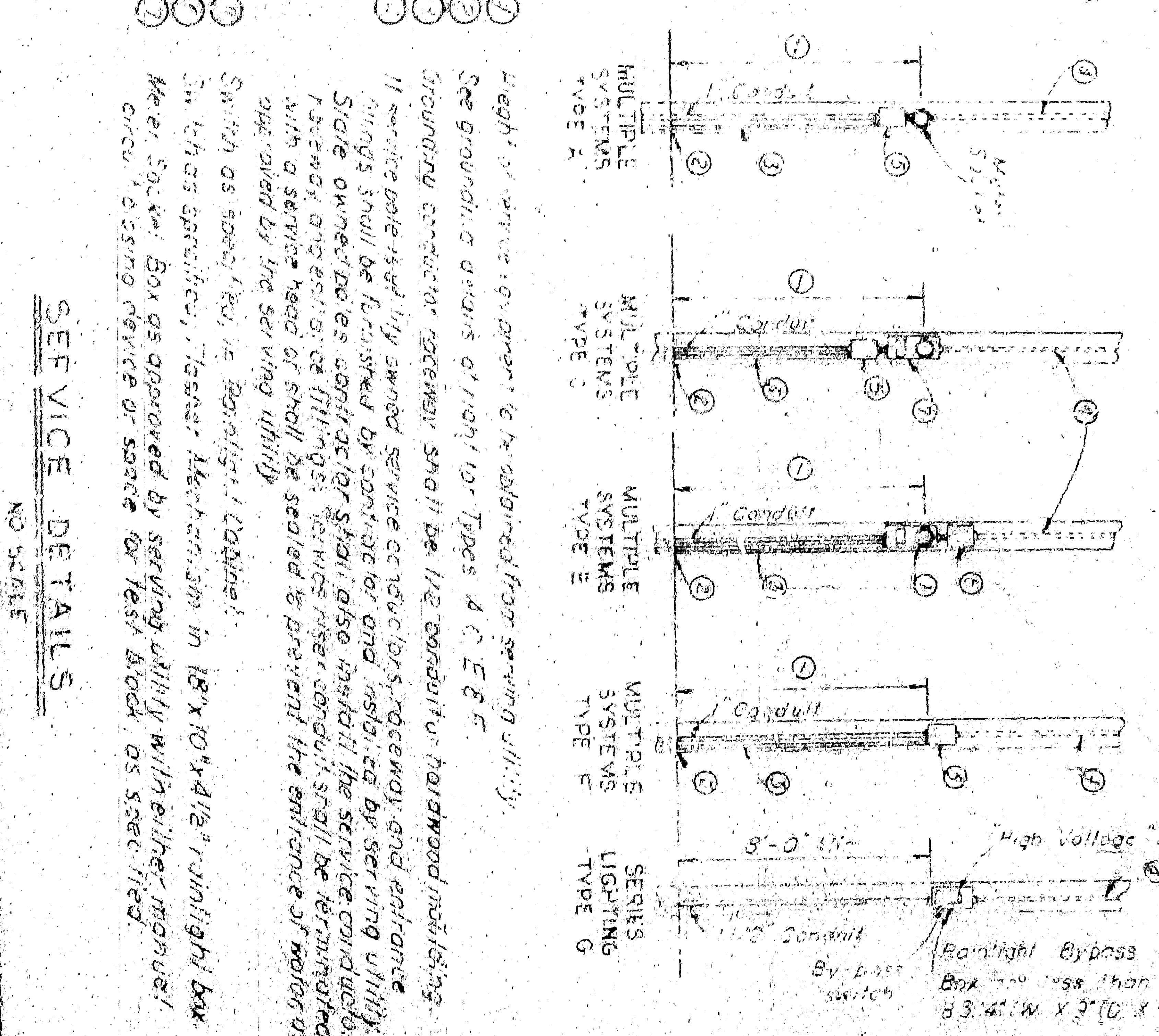
REV. DATE: 5-1-59 (E.L.)

DRAWING: E.L.

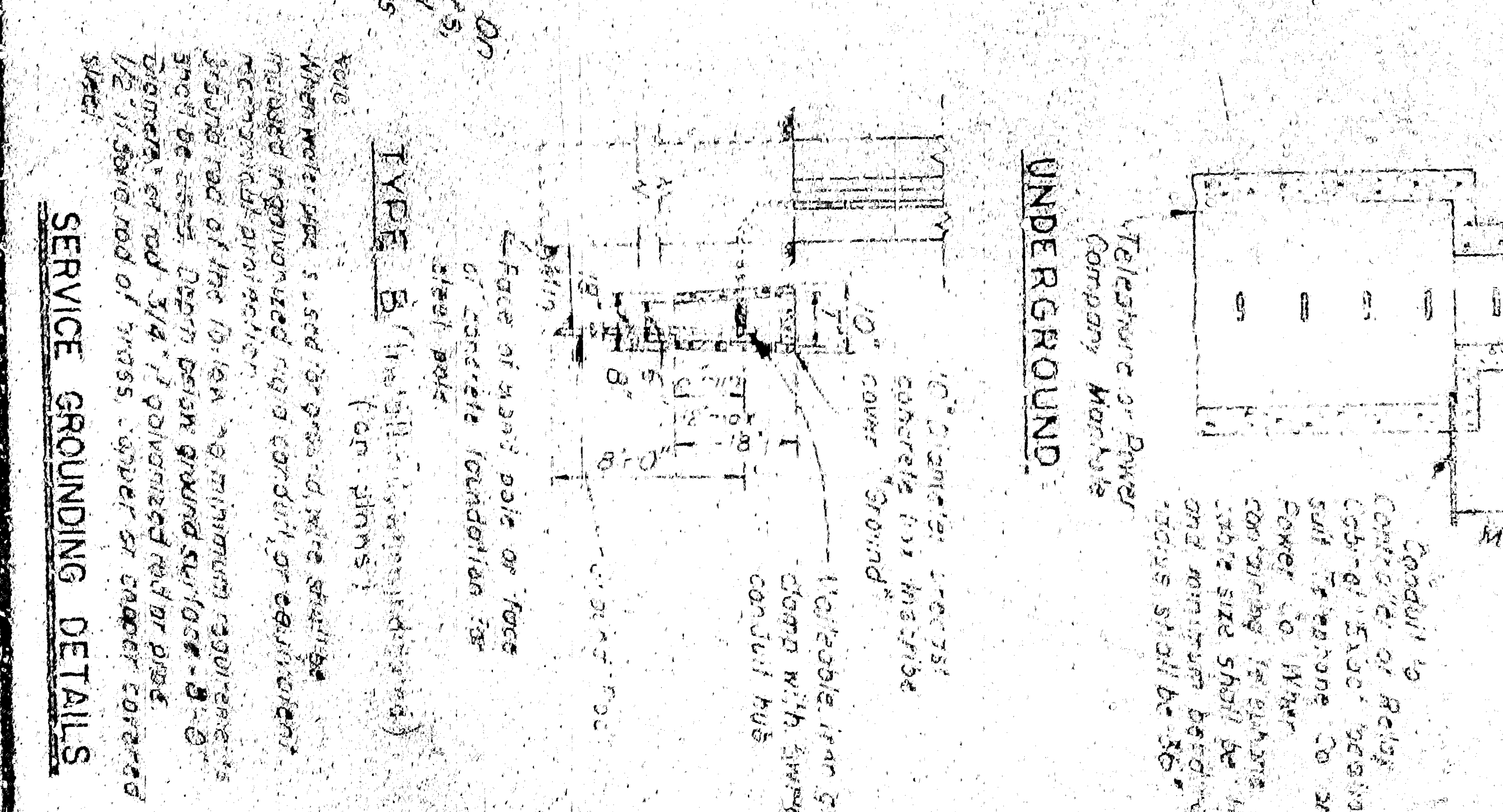


ISOLUX LINES OF MINIMUM HORIZONTAL FOOT CANDLES

See Notes on Drawing for Lighting Luminaire 30' Mounting 1'-1/2" dia.
 20,000 lumens Mercury Vapor Lamp
 Section 1'-1/2" dia.

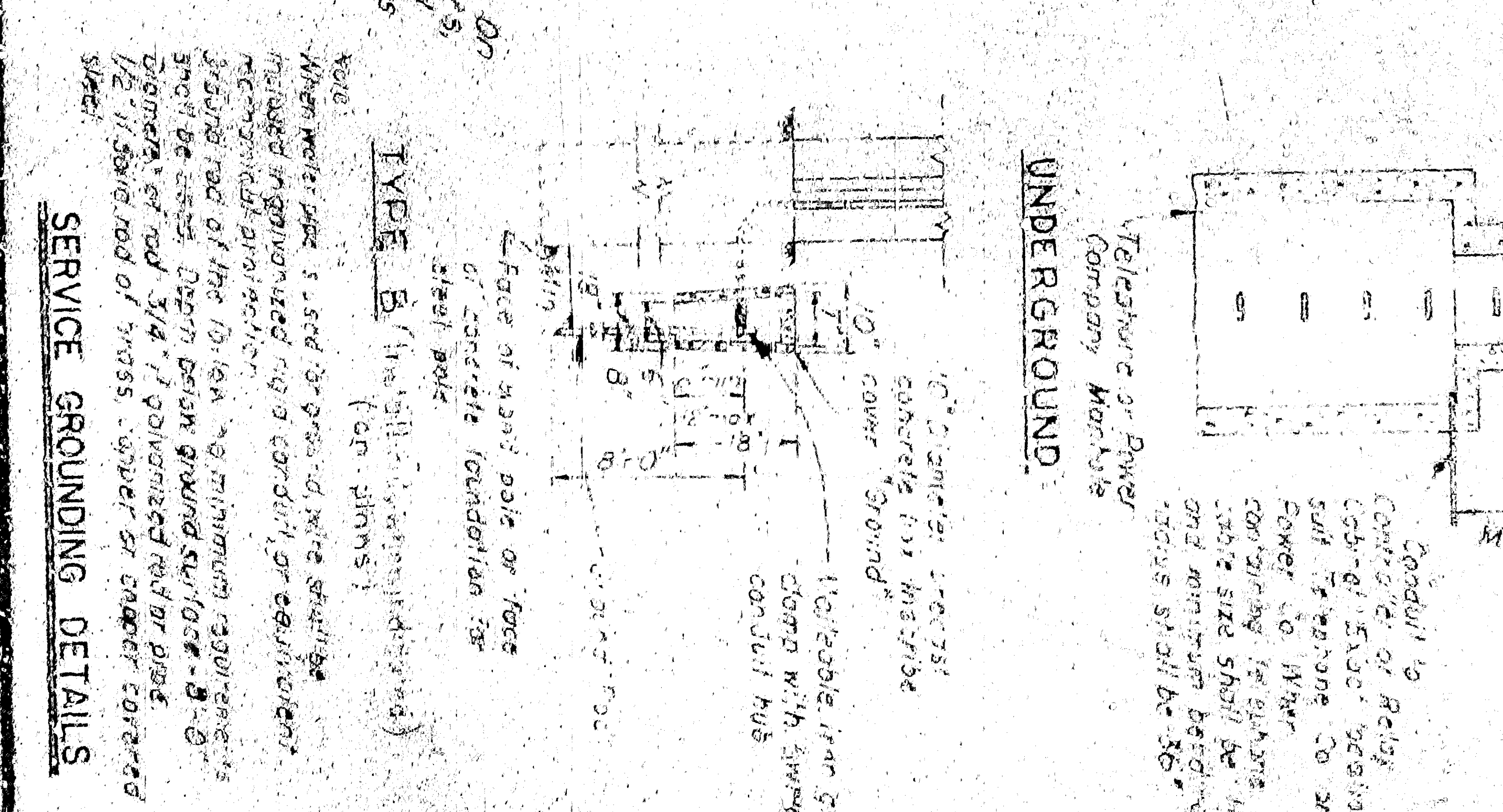


1. Length of service conductors to be selected for serving utility.
2. See ground rods of 1/2" dia. for Types A, B, C, D, E, F, G.
3. Grounding conductor between shall be 1/2" conductor for hardwired installations.
4. If service pole is to be owned by utility, service conductors and entrance cables shall be furnished by utility and installed by utility.
5. State owned poles shall also include the service conductors, entrance cables, and fittings. Service conductors shall be installed with a service head of shall be selected to provide the entrance cable to be owned by the utility.
6. Service boxes shall be installed in 18" x 10" x 4 1/2" minimum box.
7. Service boxes shall be approved by serving utility with proper approval.
8. Service boxes shall be of cast iron, steel, or aluminum.
9. Service boxes shall be of cast iron, steel, or aluminum.

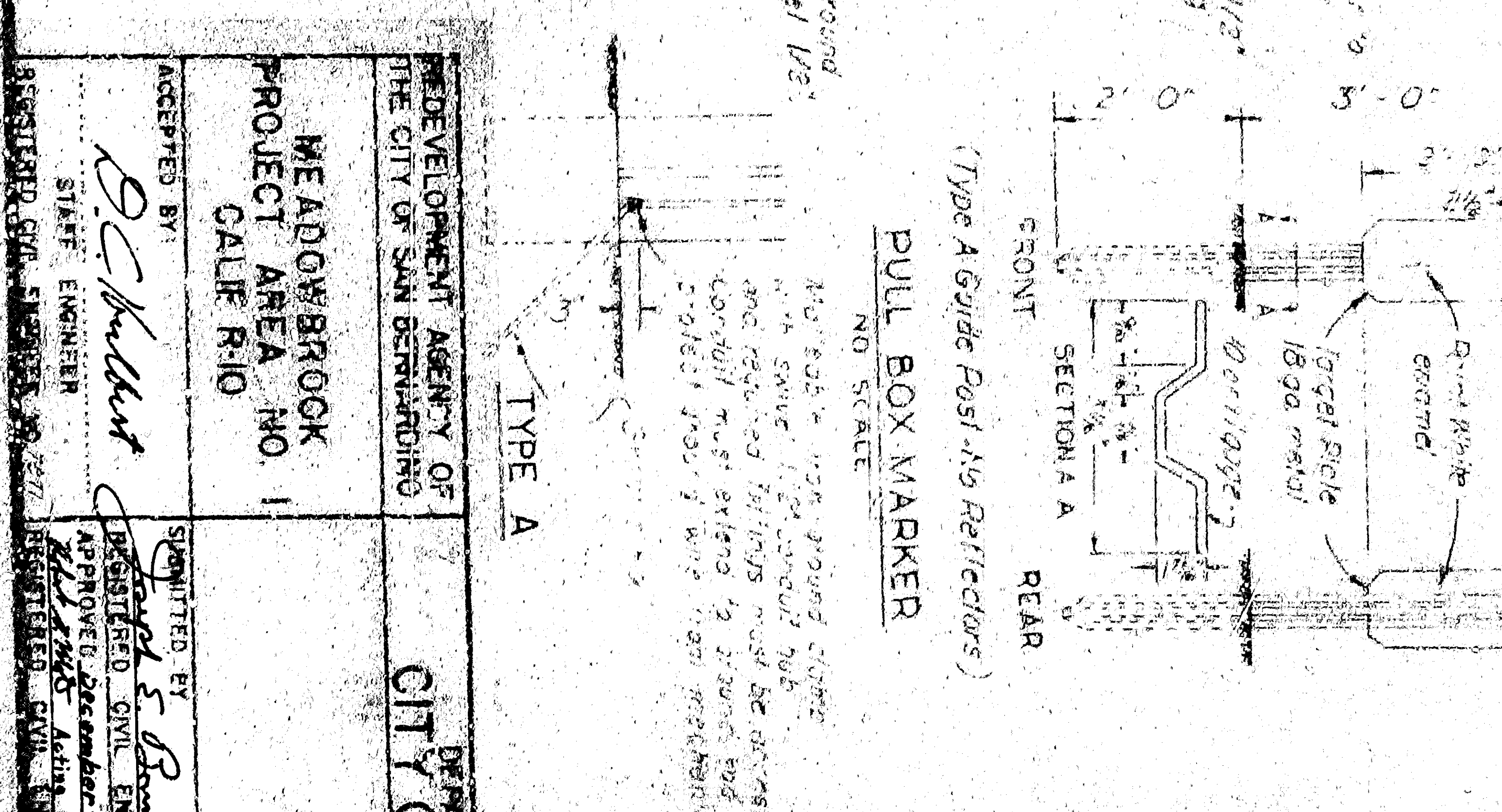


SPlicing DETAILS

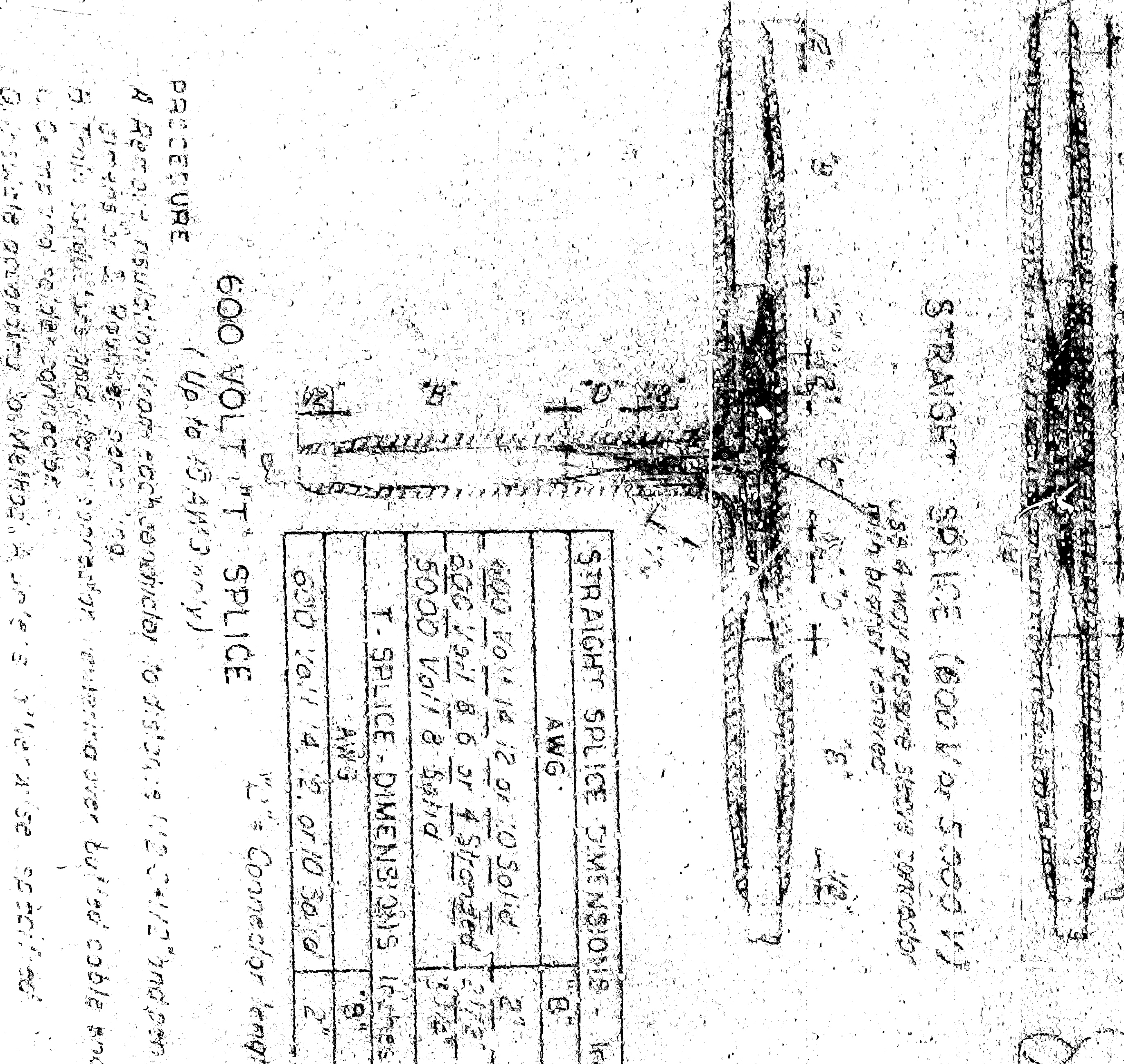
NO SCALE



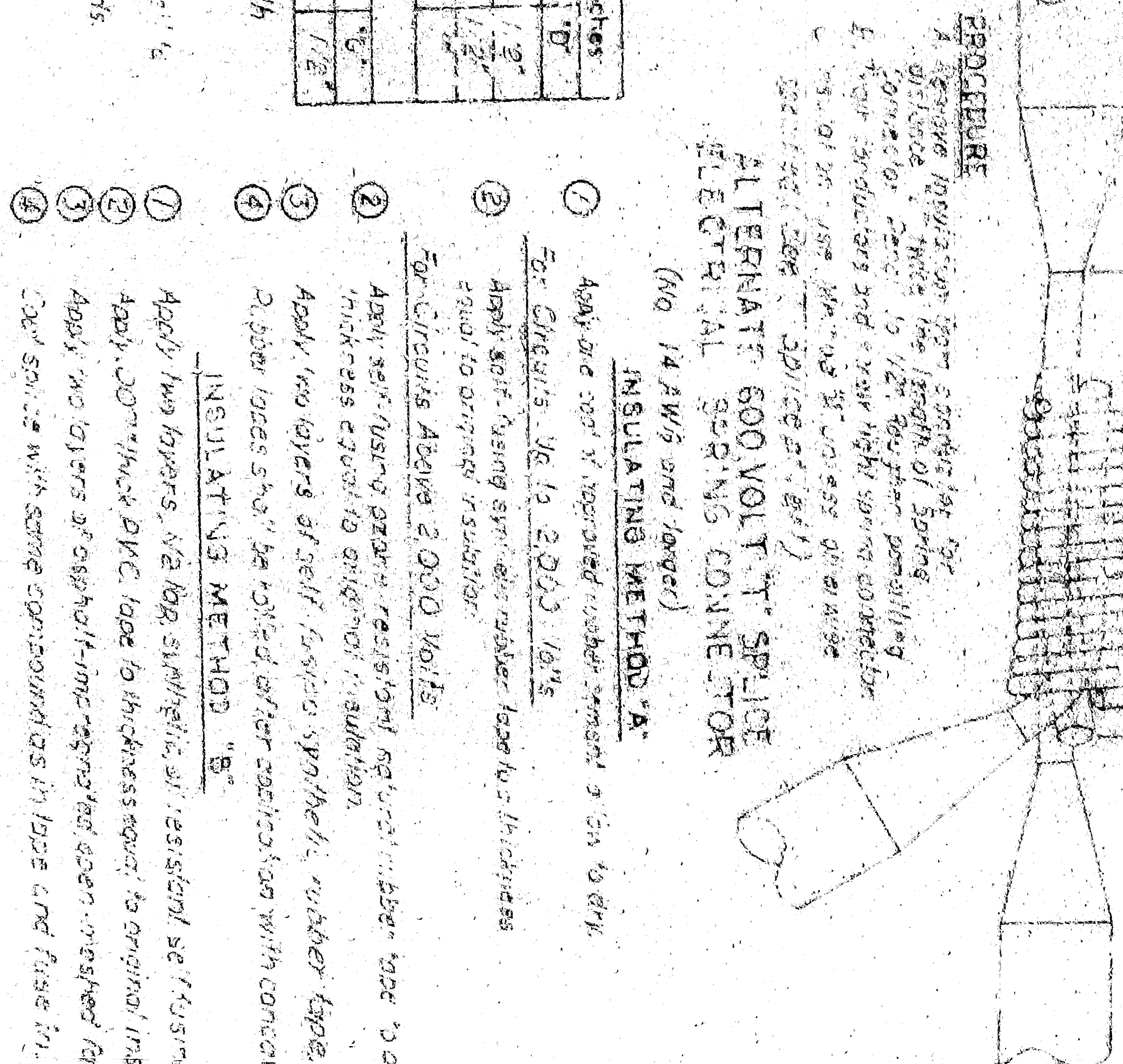
1. Apply and use of approved rubber stamp 3" x 1" to dry.
2. For Dimensions Use 1/2" 2000 lbs.
3. Apply self-fusing silicone rubber tape to thickness equal to original insulation.
4. Self-fusing silicone rubber tape shall be applied to all conductors.
5. Apply self-fusing silicone rubber tape to all conductors.
6. Apply self-fusing silicone rubber tape to all conductors.
7. Apply self-fusing silicone rubber tape to all conductors.
8. Apply self-fusing silicone rubber tape to all conductors.
9. Apply self-fusing silicone rubber tape to all conductors.



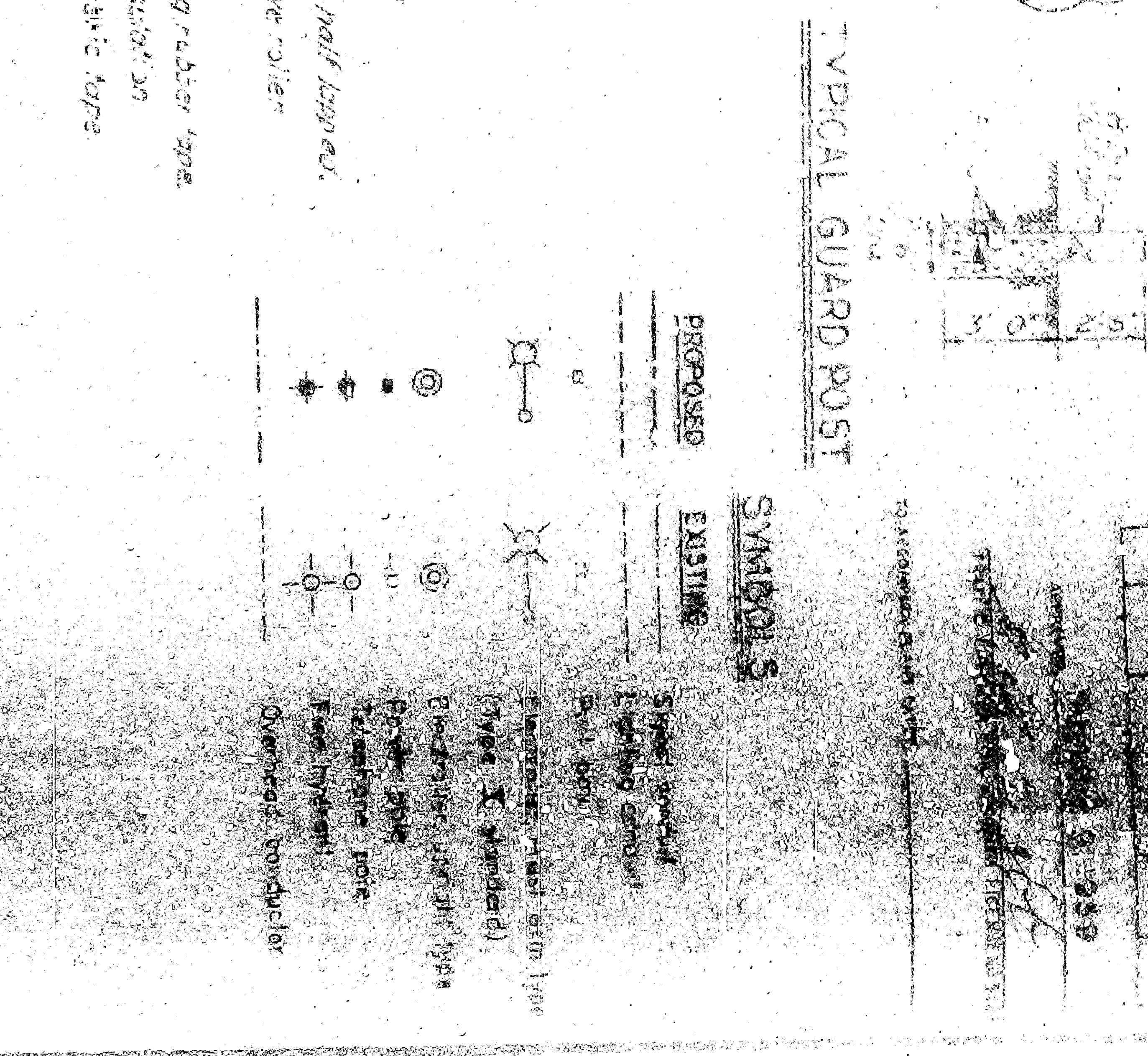
1. Apply and use of approved rubber stamp 3" x 1" to dry.
2. For Dimensions Use 1/2" 2000 lbs.
3. Apply self-fusing silicone rubber tape to thickness equal to original insulation.
4. Self-fusing silicone rubber tape shall be applied to all conductors.
5. Apply self-fusing silicone rubber tape to all conductors.
6. Apply self-fusing silicone rubber tape to all conductors.
7. Apply self-fusing silicone rubber tape to all conductors.
8. Apply self-fusing silicone rubber tape to all conductors.
9. Apply self-fusing silicone rubber tape to all conductors.



1. Apply and use of approved rubber stamp 3" x 1" to dry.
2. For Dimensions Use 1/2" 2000 lbs.
3. Apply self-fusing silicone rubber tape to thickness equal to original insulation.
4. Self-fusing silicone rubber tape shall be applied to all conductors.
5. Apply self-fusing silicone rubber tape to all conductors.
6. Apply self-fusing silicone rubber tape to all conductors.
7. Apply self-fusing silicone rubber tape to all conductors.
8. Apply self-fusing silicone rubber tape to all conductors.
9. Apply self-fusing silicone rubber tape to all conductors.



1. Apply and use of approved rubber stamp 3" x 1" to dry.
2. For Dimensions Use 1/2" 2000 lbs.
3. Apply self-fusing silicone rubber tape to thickness equal to original insulation.
4. Self-fusing silicone rubber tape shall be applied to all conductors.
5. Apply self-fusing silicone rubber tape to all conductors.
6. Apply self-fusing silicone rubber tape to all conductors.
7. Apply self-fusing silicone rubber tape to all conductors.
8. Apply self-fusing silicone rubber tape to all conductors.
9. Apply self-fusing silicone rubber tape to all conductors.



1. Apply and use of approved rubber stamp 3" x 1" to dry.
2. For Dimensions Use 1/2" 2000 lbs.
3. Apply self-fusing silicone rubber tape to thickness equal to original insulation.
4. Self-fusing silicone rubber tape shall be applied to all conductors.
5. Apply self-fusing silicone rubber tape to all conductors.
6. Apply self-fusing silicone rubber tape to all conductors.
7. Apply self-fusing silicone rubber tape to all conductors.
8. Apply self-fusing silicone rubber tape to all conductors.
9. Apply self-fusing silicone rubber tape to all conductors.

DEPARTMENT OF ENGINEERING
 CITY OF SAN BERNARDINO

MEADOWBROOK
 PROJECT AREA NO. 1

CAJON RIVER

ACCEPTED BY: *[Signature]*
 ENGINEER

DESIGNED BY: *[Signature]*
 CIVIL ENGINEER

DRAWN BY: *[Signature]*
 CIVIL ENGINEER

CHECKED BY: *[Signature]*
 CIVIL ENGINEER

DRAWING NO. 2875
 SHEET 8 OF 8

SCALE AS NOTED

STATE OF CALIFORNIA
 DEPARTMENT OF PUBLIC WORKS
 DIVISION OF HIGHWAYS

HIGHWAY LIGHTING
 INSTALL DETAILS

REV. DATE: 5-1-59
 DRAWN BY: E.